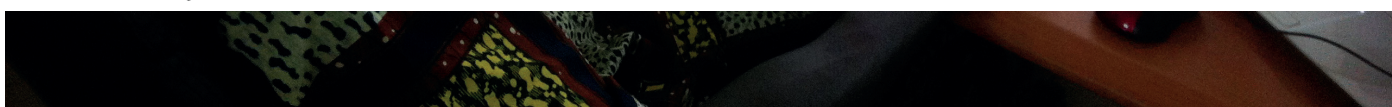


UPGRADING OF THE NATIONAL MAP AND MODERNIZATION OF THE NATIONAL MAPPING INSTITUTE (IGM)

Mali

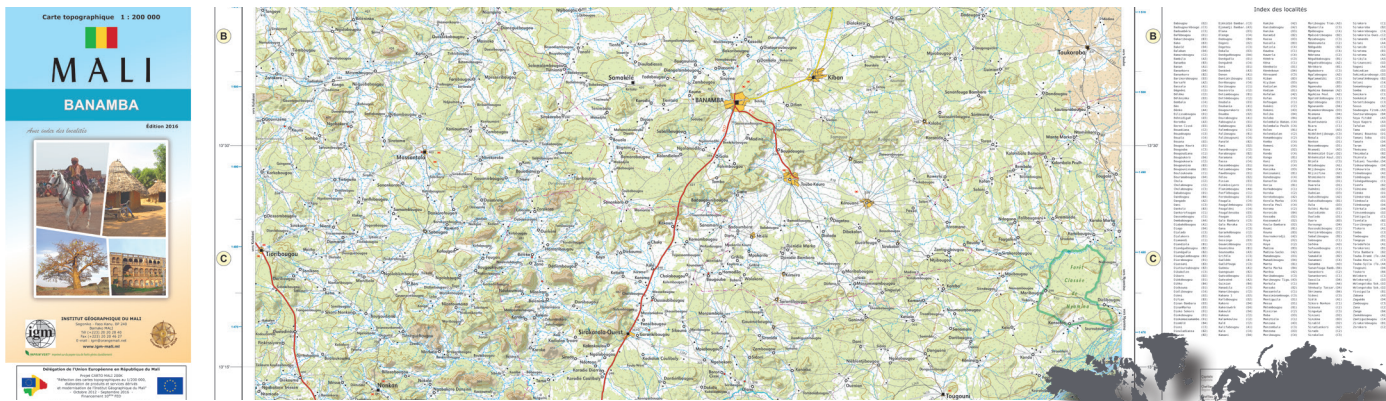


PROJECT IDENTITY SHEET

Period	4 years 10/2012 - 09/2016
Financing	European Union - 10th EDF (European Development Fund)
Amount	3.9 M EUR (without hardware and software)
Key words	Topographic map Orthoimage Base map Reference map Database Geoportal Training Capacity building Technical assistance

The update of base maps in Mali had not been carried out since several decades and the IGM, due to a lack of technical means, was no longer able to fully ensure its sovereign missions of production, dissemination and conservation of a reference map. The project to update the 1:200,000 scale topographic map as well as modernize the mapping institute was created from these needs.

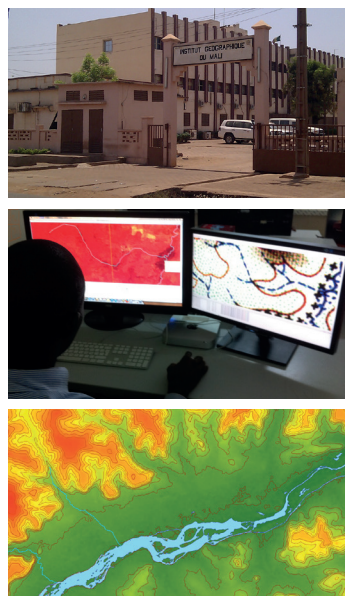
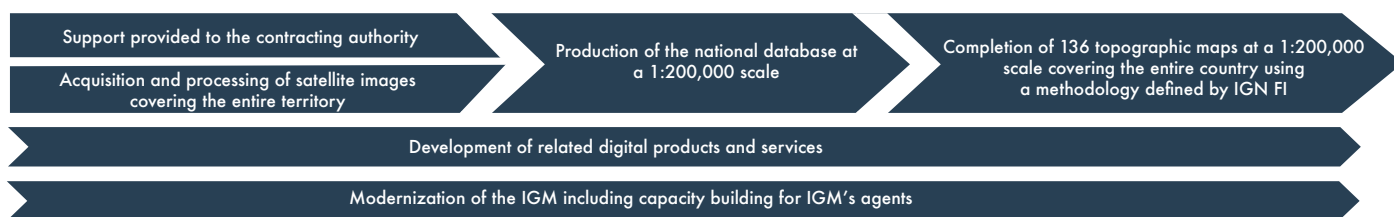
The project's aim was to produce a database and a new topographic map of the whole country at a scale of 1:200,000, to provide a homogenous and a coherent cartographic reference available for various sectors (transport, infrastructure, forests, mines, statistics, agriculture, energy, tourism, Office du Niger...) which could be used as a platform for exchanges and integration of data and information coming from these sector.



Project objectives

- **Structured data** : the topographic data are organised into an object model database that enables them to be used as a GIS and information about this data (metadata) is now available
- **A set of map-derived digital products and services** : a geoportal and a geocatalogue enabling the diffusion of the data produced by the project
- **A new series of 1:200,000 topographic maps for the whole country**
- **A modern geographic institute** equipped with high-performance tools and trained personnel

Project's components and key figures



Mali
1.24 million sq.km covered by satellite imagery and mapped



118 maps reworked at a scale of 1:200,000
Over 40,000 toponyms checked, standardised and georeferenced
A land occupation database covering 60% of the country



68 line maps produced
50 space maps (covering northern Mali)
A database organised into 7 main themes and 19 layers
28 city maps at scales ranging from 1:5,000 to 1:20,000 for the chief towns of the country's regions and circles



15 experts providing more than 1,500 days of technical assistance



9 IGM managers trained in France with 2 doing a master for a period of one year



About IGN FI

A company recognized for its skills in geographical information and its innovative approach to managing and using geospatial data, IGN FI is entirely dedicated to export projects. Over and above its technical expertise, IGN FI conveys the values of transferring knowledge and skills wherever the company works. The company has carried out numerous cartographic projects in Senegal, Burkina Faso, Benin, Luxembourg...

IGNFI
7, rue Biscornet
75012 PARIS - FRANCE
Phone: +33 1 42 34 56 56
Fax: +33 1 42 34 56 51
info@ignfi.fr - www.ignfi.com